



Kiliç Seafood

Since 1993



About Us

Founded in 1993, Kılıç Seafood has become one of the world's leading aquaculture brands through its fully integrated production model and sustainable growth strategy. Operating offshore farms in the pristine waters of the Mediterranean, Kılıç delivers premium sea bream, sea bass, and other high-value species to nearly 70 countries worldwide.

Supported by a strong global sales and distribution network, Kılıç Seafood has been recognized as Türkiye's largest exporter in the Seafood and Animal Products category by the Turkish Exporters Assembly (2010–2026).

From sea to table, Kılıç Seafood is committed to quality, sustainability, and excellence at every stage of the value chain.



World leader in the production of Mediterranean Sea Bass and Sea Bream.



Türkiye's largest exporter of Seafood and Fishery, with an export volume of \$409.6 million.



Ranked 89th on the ISO "Türkiye's Top 500 Industrial Enterprises" list.

Key Achievements



Annual production capacity of **110,000 tons** of harvested fish.



Annual production of **607 million** juvenile fish (fry).



Annual fish feed production capacity of **345,000 tons**.

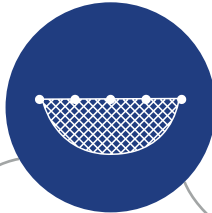


Fully Integrated Production

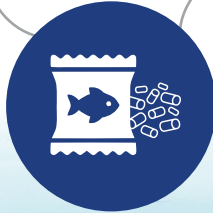
Juvenile Fish



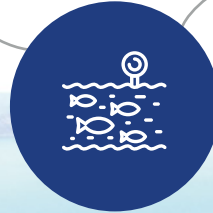
Aquaculture



Global Logistics



Fish Feed
Production



Processing and
Packaging



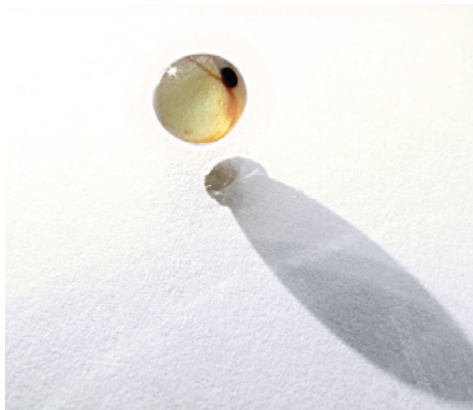
EPS Box
Production

Juvenile Fish

World's Largest Producer of Mediterranean Sea Bass and Gilthead Sea Bream

Juvenile fish are the most strategic starting point of Kiliç Seafood's integrated production chain. The sustainability of quality is shaped starting from the egg, with a strong genetic structure and a healthy development process. By carrying out juvenile fish production entirely in-house, Kiliç Seafood takes full control of the entire aquaculture process from start to finish.

In production carried out in modern hatcheries; biosecurity, hygiene, and environmental balance are maintained at the highest level. Juvenile fish developed under controlled conditions gain a strong adaptation capability through environments that support the natural growth rhythm. This approach ensures high yield and consistent quality in the later stages of the aquaculture process.



607 million units of juvenile fish are produced annually within Kiliç Seafood. The production portfolio includes Gilthead Sea Bream, Mediterranean Sea Bass, Salmon Trout, Rainbow Trout, and Mediterranean Corvina (Meagre). The existing capacity has the flexibility and scale to meet all domestic and international demands.

Kiliç Seafood, a world leader especially in the production of Gilthead Sea Bream and Mediterranean Sea Bass, guarantees the reliability and sustainability of its integrated production model with this strong foundation established at the juvenile fish stage.



Aquaculture

110,000 tons of harvested fish annually

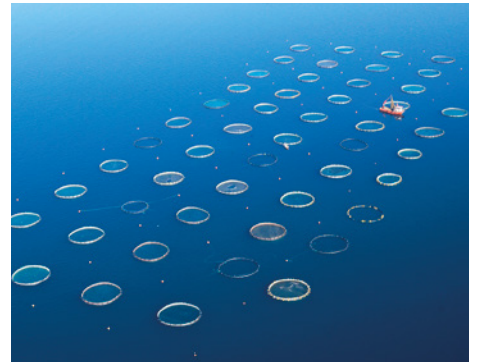


Kiliç Seafood carries out aquaculture with an integrated approach that combines advanced technology, scientific methods, and field experience. Aquaculture activities are built on systems that observe environmental balance, center on animal welfare, and make productivity sustainable.

Production processes carried out in sea and land facilities are continuously monitored in line with critical parameters such as water quality, current, oxygen levels, and feeding programs. While the natural growth rhythm of the fish is preserved, stress factors are minimized. In this way, both product quality increases and contribution is made to the protection of natural resources.

Kiliç Seafood's possession of its own juvenile fish and feed production offers the advantage of full control in the aquaculture process. This integration provides consistent quality, traceability, and operational efficiency. The facilities, managed by expert teams, operate in accordance with national and international standards.

Aquaculture lies at the heart of Kiliç Seafood's integrated production power; it guarantees quality without interruption from the beginning until harvest.



Fish Feed Production

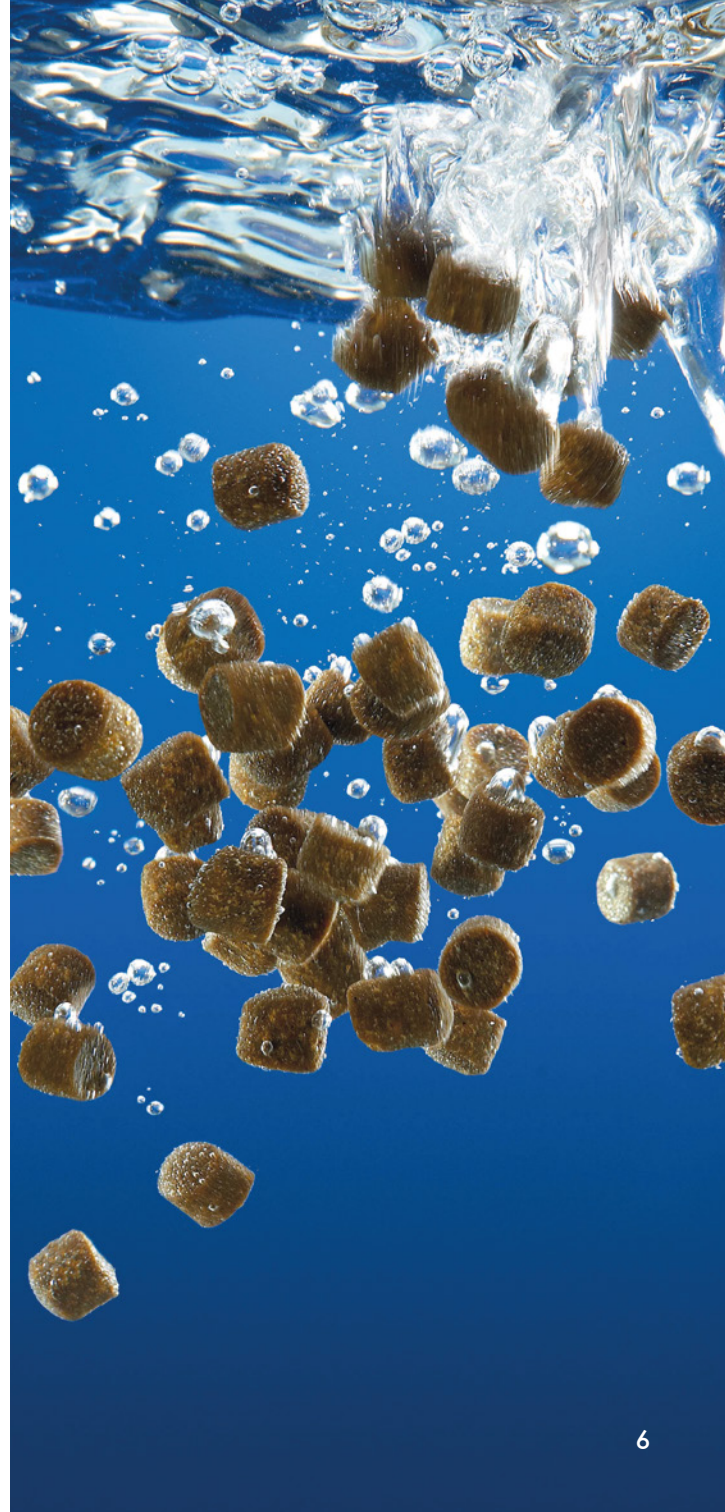
Integrated feeding power with an annual extruder feed production capacity of 345 thousand tons.

Feed has a direct impact on fish health, growth performance, and final product quality. In order to take full control of this critical process, Kiliç Seafood carries out feed production within its integrated structure in advanced technology facilities. High-performance extruder production technology is used in the facilities, which have an annual feed production capacity of 345 thousand tons.

The extruder system ensures that feeds are produced in a homogeneous structure with high digestibility. In this way, while nutrient losses are minimized, the feed conversion rate of the fish is increased. Each feed formula is specially designed according to the fish species, age group, and developmental stage.

Kiliç Seafood feed production has a structure whose compliance with international standards is certified by ASC Feed Certification. This certification guarantees not only the compliance of production processes, but also responsible raw material sourcing, full traceability, reduction of environmental impact, social compliance, and an ethical production approach.

Feed production is one of the fundamental components of Kiliç Seafood's end-to-end quality approach and adds value to the entire production chain.



Processing and Packaging

Modern processing and packaging infrastructure secured by international certificates.



Kiliç Seafood manages processing and packaging processes with the highest standards of hygiene, quality, and traceability in the journey of fish from sea to table. All operations carried out in facilities with modern infrastructure are planned and implemented in full compliance with food safety criteria.

Harvested fish are taken to processing facilities without losing time, and the cold chain is maintained without interruption. Sorting, cleaning, filleting, portioning, and packaging processes are meticulously carried out on automation-supported production lines. By recording every stage, full traceability is ensured from the source of the product to the final shipment point.

Packaging solutions that preserve the freshness and nutritional value of the product are used in the packaging processes. Developed in accordance with the different expectations of domestic and export markets, packaging options support quality continuity throughout the shelf life.

Kiliç Seafood's processing and packaging facilities have successfully passed national and international audits and are secured by certificates recognized in global markets.



EPS Box Production

Kılıç EPS solutions designed for freshness, durability, and logistical efficiency.

Packaging plays as critical a role as logistics in preserving product quality. With this awareness, Kılıç Seafood strengthens its supply chain by developing EPS fish boxes within its own production infrastructure. EPS boxes, featuring high thermal insulation, durability, and a hygienic structure, guarantee the freshness of the fish throughout the transport process.

While EPS fish boxes help maintain the cold chain, they minimize product losses thanks to their impact resistance. Their lightweight structure provides efficiency in logistical operations, while their standard dimensions facilitate storage and shipment processes.

Kılıç Seafood's integrated approach to EPS production ensures that quality control continues at the packaging stage. Thus, the product is transported from the processing facility to the final destination with the same quality standards.

EPS fish boxes are a tangible reflection of Kılıç Seafood's end-to-end control philosophy and form an inseparable part of logistical performance.



Our Sustainability Approach

A Transformation That Nourishes the Future

As Kiliç Seafood, we see sustainability not as an obligation, but as our reason for existence. We have adopted as a fundamental principle to give back to nature, people, and the future every value we take from the sea. While protecting today's resources, we work to leave a bluer world to the generations of tomorrow.



Environment

Production in Harmony with Nature

The continuity of the abundance coming from the sea is possible through respect for nature. For this reason, we place the environment at the center of all our processes. In our farming facilities, we use continuous monitoring and measurement systems to protect seawater quality.



Our Sustainability Approach

People

Social Welfare and Inclusiveness

At the heart of sustainability lies people. At Kiliç Seafood, we measure success not only by production capacity, but by the contribution we make to human development.



Management

A Culture of Transparency, Ethics, and Responsibility

At Kiliç Seafood, sustainability is not only a goal; it is an integral part of our governance culture. We take all our strategic decisions in line with ethical values, the principle of transparency, and a long-term sense of responsibility.





-  /KilicDenizTr
-  /kilicdeniztr
-  /company/kilic-deniz
-  /KilicDenizTr
-  /@klcdeniz3782

Headquarters: Bodrum Türkiye

+90 252 501 10 00

export@kilicseafood.com

www.kilicseafood.com