





Where We Are

We are in Bodrum which is a large peninsula on the south-west coast of Türkiye. It is surrounded by the Gulluk Bay in the north, Gokova Bay in the south and the Aegean Sea in the west. The peninsula is surrounded by the Mediterranean climate. It has lots of wonderful bays which include valuable seafood sources. The distances between towns are short and make it easy to travel from one place to another. Bodrum peninsula has different alternative to travel, delicious foods and historical places. For Instance, Mausoleum, regarded as one of the Seven Wonders of the World, one of the world's most important underwater archeology museum, Ancient Theatre of Bodrum, Myndos Gate which is reputed to be built in 360 b.c. etc.



Since 1993, Kiliç Seafood became the world's leading aquaculture brand thanks to its rapid growth and its provision of service with the concept of full integration. Kiliç Seafood operates according to EU and FDA standards in its all fields as juvenile fish breeding, aquaculture; fish feed production, fish box production, processing, packing and distribution.

Kiliç Seafood operates aquaculture in off-shore (open sea) systems located in the healthy waters of the Mediterranean and serves the marvelous Mediterranean tastes to the tables of fish enthusiasts approximately in 60 countries around the world. Kiliç Seafood who has become a world leader with its annual juvenile production capacity of 500 million, produces Sea Bream, Sea Bass, Royal Sea Bass (Meagre), Trout, Salmon Trout, Sea Trout and Bluefin Tuna.

Kiliç Seafood has a production capacity 75,000 tons and creates an effective sales marketing and distribution network all around the world. This enables Kiliç Seafood to be proud of being Türkiye's leading exporter in all the field.*

*Türkiye Exporter's Assembly – Seafood and Animal Products Category (2010-2022)

Kiliç Seafood in Numbers

The world's biggest fully integrated plant with a large production volume

(Total annual production capacity of Sea Bream, Sea Bass, Royal Sea Bass (Meagre), Trout , Salmon Trout, Sea Trout 75.000 tons)

The world's biggest juvenile fish production capacity

(Total production capacity of Sea Bream, Sea Bass, Royal Sea Bass (Meagre), Trout , Salmon Trout and Sea Trout is 500 million juveniles per year)

One of the biggest fish feed production company in Europe

(Production capacity is 195.000 tons/year)

The Champion in Türkiye in its field with exports to 60 countries

(Turkish Exporter's Assembly - Seafood and Animal Products Category 2010-2022)

Kiliç Seafood raises the standards, leads the sector and ranks among Türkiye's biggest companies

Our Environmental Sustainability Process

As Kiliç Seafood, we are proud of our leading companies with more than 2500 employees, 75 thousand tons of production and export volume exceeding 300 million dollars.

We hold all the quality standard certificates for our industry and ISO22000, IFS, BRC, Global GAP certificates as well as Aquaculture Stewardship Council (ASC) certificates. ASC is one of the world's leading certification and labeling certifications in the field of responsible aquaculture. The GLOBAL GAP certificate is one of the most important certificates that indicating that food production is performed under hygienically safe conditions and the products are produced through environmentally friendly practices. Our fully integrated production process and our sense of responsibility towards the environment enable us to raise our success rate to the next level every year and to ensure the sustainability of our brand value.

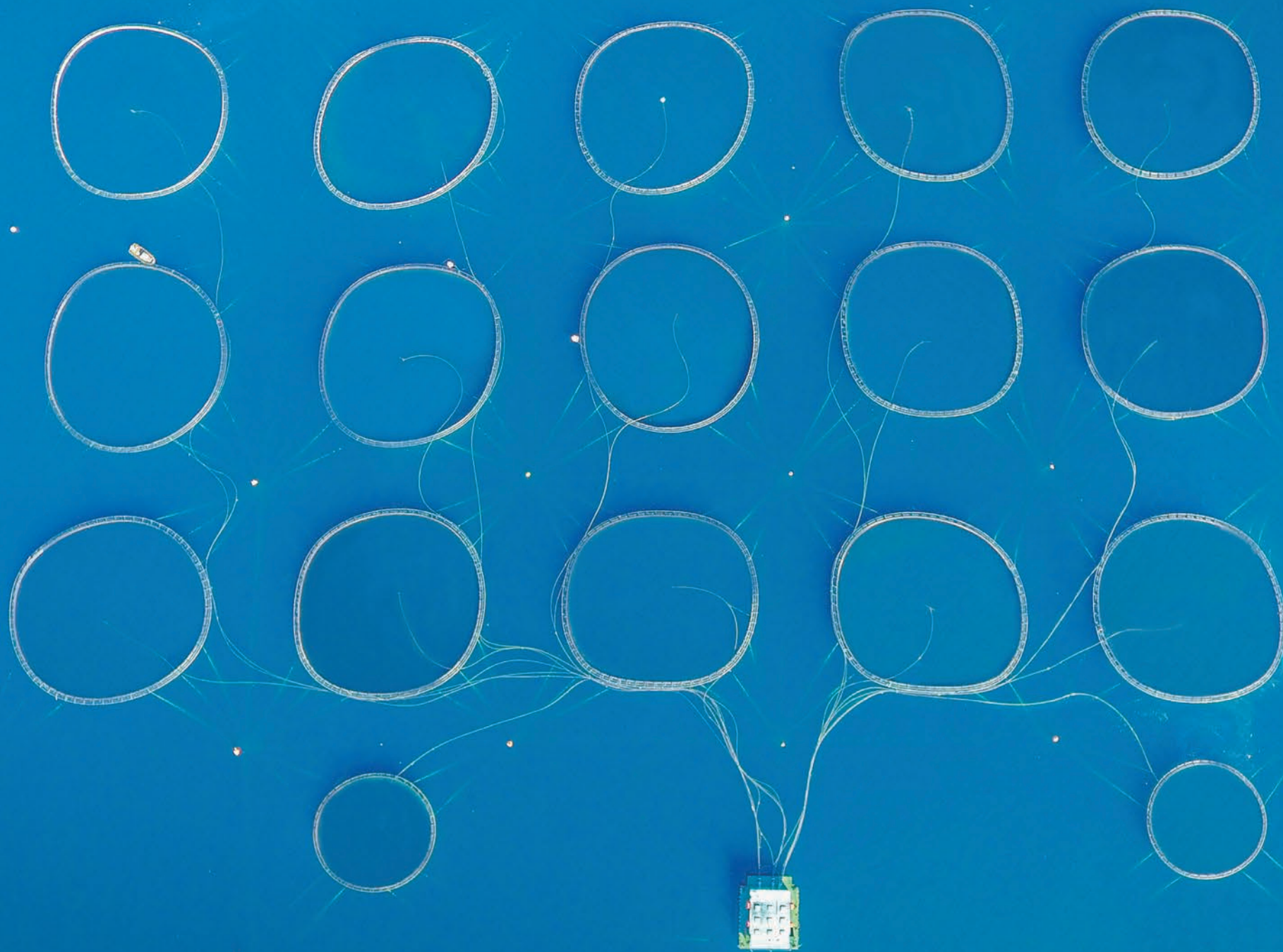
We have many environmentally friendly applications. Some of those;

- Electricity obtained from solar panels is used as an energy source in our farms as much as possible. In this way, carbon footprint are reduced.
- Periodic wastewater analyzes are carried out in all our hatcheries and adaptation facilities in accordance with the legal legislation. The results are in accordance with in ideal values and are processed into the system of the Ministry of Environment and Urbanization.
- Within of regulations, trix analyzes (The Trophic Index (TRIX) to protect the marine environment more effectively) are carried out regularly every year. Analysis results are transferred to the data system of the relevant ministry.
- Hazardous wastes at the all facilities are stored in accordance with the legal legislation and sent to licensed recycling companies in periods that will not exceed the legal requirements
- By keeping the environmental compatibility under control with the ozone systems in our extruder fish feed facilities, air emission measurements are made in conformity with the legal legislation.
- Following responsible sourcing policies on supply chain to ensure that there is no detrimental impact on endangered species;

Benthic analysis and cumulative impact analysis which are coming from the requirement of Sustainable Aquaculture Standards and stakeholders is an evidence that there is no negative impacts on natural habitats with aquaculture operations.

It is our mission to fulfill our responsibilities for the humanity of today and the next generations, to act with the awareness of environmental protection and spread this mentality. We implement that environmentally friendly applications along with the preventive actions against the unnecessary use of resources with our sustainably improving production system.





Mediterranean Sea Bass

(*Dicentrarchus Labrax*)

Fresh & Chilled • Frozen • Fillets



Whole Fresh & Chilled Sea Bass
Whole Frozen Sea Bass

Sizes: 200/300-300/400-400/600-600/800-800/1000-1000/1500 gr.

GLOBALG.A.P.



ASC-C-02440
We are ASC certified



Whole Fresh & Gutted Sea Bass
Whole Frozen Gutted Sea Bass

Sizes:200/300-300/400-400/600-600/800
 800/1000-1000/1500 gr.



Fresh Sea Bass Single Fillet Skin On,PB
Frozen Sea Bass Single Fillet Skin On,PBOO

Sizes:50/80-80/100-100/140-140/180 gr.



Fresh Sea Bass Single Fillet Skin On,PBO
Frozen Sea Bass Single Fillet Skin On,PBO

Sizes:50/80-80/100-100/140-140/180 gr.



Fresh Sea Bass Single Fillet Skinless,PBO
Frozen Sea Bass Single Fillet Skinless,PBO

Sizes:50/80-80/100-100/140-140/180 gr.



Fresh Sea Bass Single Fillet Skinless,PBI
Frozen Sea Bass Single Fillet Skinless,PBI

Sizes:50/80-80/100-100/140-140/180 gr.



Fresh Sea Bass Single Fillet Skinless,PBI
Frozen Sea Bass Single Fillet Skinless,PBI

Sizes:100/160-160/200-200/280-280/360 gr.



Fresh Sea Bass Butterfly Fillet,PBI
Frozen Sea Bass Butterfly Fillet,PBI

Sizes:100/160-160/200-200/280-280/360 gr.



Fresh Sea Bass Twin Fillet,PBO
Frozen Sea Bass Twin Fillet,PBO

Sizes:100/160-160/200-200/280-280/360 gr.



Fresh Sea Bass Twin Fillet,PBO
Frozen Sea Bass Twin Fillet,PBO

Sizes:100/160-160/200-200/280-280/360 gr.

Gilthead Sea Bream

(*Sparus Aurata*)

Fresh & Chilled • Frozen • Fillets



Whole Fresh & Chilled Sea Bream
Whole Frozen Sea Bream

Sizes: 200/300-300/400-400/600-600/800-800/1000-1000/1500 gr.

GLOBALG.A.P.





Whole Fresh & Gutted Sea Bream
Whole Frozen Gutted Sea Bream
 Sizes:200/300-300/400-400/600-600/800
 800/1000-1000/1500 gr.



Fresh Sea Bream Single Fillet Skin On,PBO
Frozen Sea Bream Single Fillet Skin On,PBO
 Sizes:50/80-80/100-100/140-140/180 gr.



FFresh Sea Bream Single Fillet Skin On,PBI
Frozen Sea Bream Single Fillet Skin On,PBI
 Sizes:50/80-80/100-100/140-140/180 gr.



Fresh Sea Bream Single Fillet Skinless,PBO
Frozen Sea Bream Single Fillet Skinless,PBO
 Sizes:50/80-80/100-100/140-140/180 gr.



Fresh Sea Bream Single Fillet Skinless,PBI
Frozen Sea Bream Single Fillet Skinless,PBI
 Sizes:50/80-80/100-100/140-140/180 gr.



Fresh Sea Bream Butterfly Fillet,PBO
Frozen Sea Bream Butterfly Fillet,PBO
 Sizes:100/160-160/200-200/280-280/360 gr.



Fresh Sea Bream Butterfly Fillet, PBI
Frozen Sea Bream Butterfly Fillet, PBI
 Sizes:100/160-160/200-200/280-280/360 gr.



Fresh Sea Bream Twin Fillet, PBO
Frozen Sea Bream Twin Fillet, PBO
 Sizes:100/160-160/200-200/280-280/360 gr.



Fresh Sea Bream Twin Fillet, PBI
Frozen Sea Bream Twin Fillet, PBI
 Sizes:100/160-160/200-200/280-280/360 gr.

Mediterranean Corvina (Meagre)

(*Argyrosomus Regius*)

Fresh & Chilled • Frozen • Fillets



Whole Fresh & Chilled Meagre

Sizes: 800/1000-1000/2000-2000/3000-3000/4000-4000/5000 gr.

GLOBALG.A.P.



Whole Fresh & Gutted Meagre
Whole Frozen & Gutted Meagre

Sizes: 800/1000-1000/2000-2000/3000-3000/4000-4000/5000 gr.



Fresh Meagre Single Fillet Skin On,PBO
Frozen Meagre Single Fillet Skin On,PBO
 Sizes: 180/250-250/500-500/750-750/1000 gr.



Fresh Meagre Single Fillet Skin On,PBI
Frozen Meagre Single Fillet Skin On,PBI
 Sizes: 180/250-250/500-500/750-750/1000 gr.

Rainbow Trout

(*Oncorhynchus Mykiss*)

Fresh & Chilled • Frozen • Smoked • Fillets



Whole Fresh & Chilled Trout
Whole Frozen Trout

Sizes: 200/300-300/400-400/600 gr.

GLOBALG.A.P.



ASC-C-02440
We are ASC certified



Whole Fresh & Gutted Trout
Whole Frozen & Gutted Trout
 Sizes: 200/300-300/400-400/600 gr.

Frozen Trout Butterfly Fillet
 Sizes: 100/150-150/200 gr.

Fresh Trout Single Fillet
Frozen Trout Single Fillet
 Sizes: 50/80-80/120 gr.



Frozen Smoked Trout Fillet
 Sizes: 60/125 gr. vacuum pack

Salmon Trout & Sea Trout

Fresh & Chilled • Frozen • Smoked • Fillets



Whole Fresh & Chilled Salmon Trout
Whole Frozen Salmon Trout

Sizes: 1/2-2/3-3/4-4/5 kg.

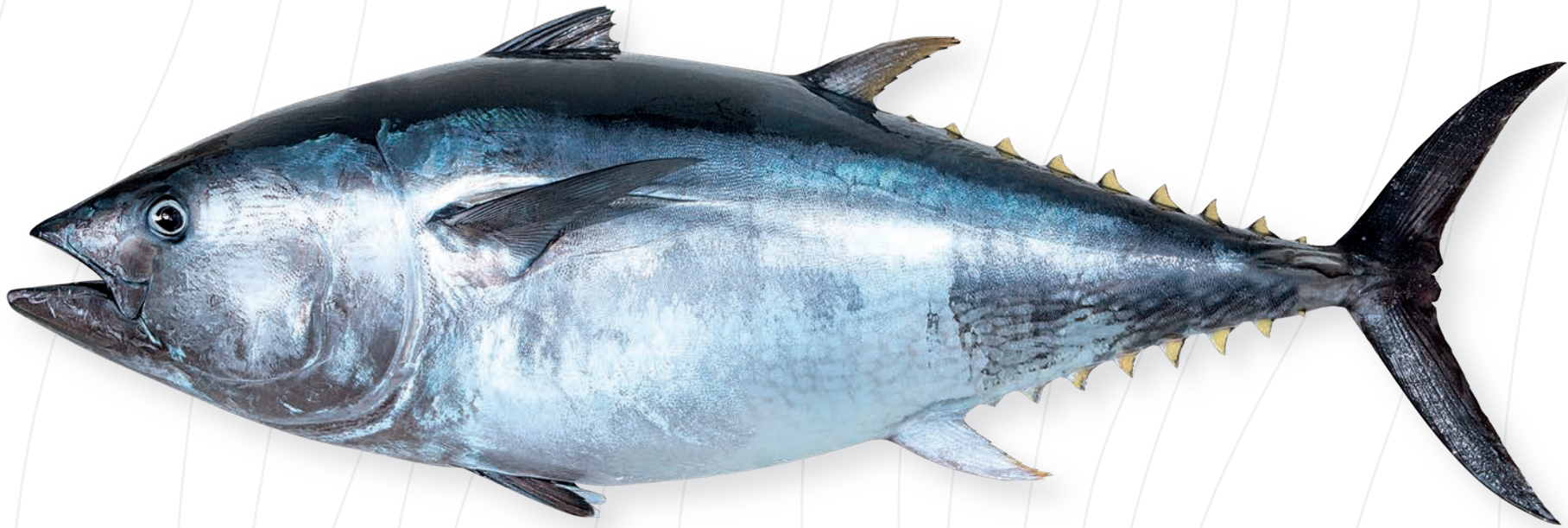




Fresh Salmon Trout Fillets
Frozen Salmon Trout Fillets
Sizes: 250/500-500/750-750/1000 gr.

Diamond of the Sea

We call Bluefin Tuna (*Thunnus Thynnus*) as the diamond of sea for reason; It is very valuable in terms of nutrition.



Omega 3 fatty acids in Tuna that comes as delight to the tables with Kılıç Seafood quality, specialty and sensitivity, is significantly important in terms of protection of cardiovascular health. Furthermore, Tuna fish also decreases the risk of stroke and Alzheimer's disease, protects eye health, and prevents many cancer risks. The selenium inside makes people happy, and eliminates toxins out of body.

Diamond of the Sea

Bluefin Tunas are caught in the blue waters of Mediterranean Sea, approved by ICCAT and exported mainly Japan.

So they have already become an indispensable taste for people who love Sushi and Sashimi.

This delicious treasury is now accessible any time thanks to Kılıç Seafood.



Packed Frozen Products



**Whole Frozen Guttred Rainbow Trout
Retail Pack**
Sizes: 1000 gr./Pack (200-350 gr.)



**Frozen Single Fillet Rainbow Trout
Retail Pack (Skin On)**
Sizes: 750 gr./bag (50/70-70/90 gr.)



**Frozen Guttred Rainbow Trout
Retail Packed**
Sizes: 340 gr./box (150-200 gr.)



Frozen Smoked Trout Fillet
Sizes: 60-125 gr.



**Whole Frozen Guttred Sea Bream
Whole Frozen Guttred Sea Bass**
Sizes: 1000 gr.



Modified Atmosphere Packed Fresh Products



Whole Guttred Sea Bass

Sizes: 200-300/300-400 gr.

Whole Gutted Sea Bream
200-300 gr.

Sea Bream Fillet

50/80 gr. (200-300 gr.) 80/100 gr. (300-400 gr)

Sea Bass Fillet

50/80 gr. (200-300 gr.) 80/100 gr. (300-400 gr.)

Ready to Cook Frozen Products

With Lemon and Basil



Mediterranean Sea Bream With Lemon and Basil Sauce

Package Contents: 2x80 gr. boneless fillet,
40 gr. lemon and basil sauce
Packing: 10x200 gr. Carton Boxes

**Mediterranean Sea Bass
With Lemon and Basil Sauce**
Package Contents: 2x80 gr. boneless fillet,
40 gr. lemon and basil sauce
Packing: 10x200 gr. Carton Boxes



**BOIL IN THE BAG
PRODUCTS IN
200 gr. RETAIL BOX**



Ready to Cook Frozen Products

With Tomato and Parsley



Mediterranean Sea Bass With Tomato and Parsley Sauce

Package Contents. 2x80 gr. boneless fillet, 100/150 gr.
tomato and parsley sauce
Packing: 10x250 gr. Carton Boxes

**Mediterranean Sea Bream
With Tomato and Parsley Sauce**
Package Contents: 2x80 gr. boneless fillet, 100/150 gr.
tomato and parsley sauce
Packing: 10x250 gr. Carton Boxes



**OVENABLE &
MICROWAVEABLE
TRAY PRODUCTS IN
250 gr. RETAIL BOX**



Ready to Cook Frozen Products

With Orange and Black Papppercorn



Meagre With Orange and Black Papppercorn Sauce

Package Contents: 2x75 gr. boneless fillet, 50 gr. extra virgin olive oil, sliced orange and black papppercorn

Packing: 10x200 gr. Carton Boxes



Mediterranean Sea Bass

With Orange and Black Papppercorn Souce

Package Contents: 2x75 gr. boneless fillet, 50 gr. extra virgin olive oil, sliced orange and black papppercorn

Packing: 10x200 gr. Carton Boxes



Mediterranean Sea Bream

With Orange and Black Papppercorn Souce

Package Contents: 2x75 gr. boneless fillet, 50 gr. extra virgin olive oil, sliced orange and black papppercorn

Packing: 10x200 gr. Carton Boxes

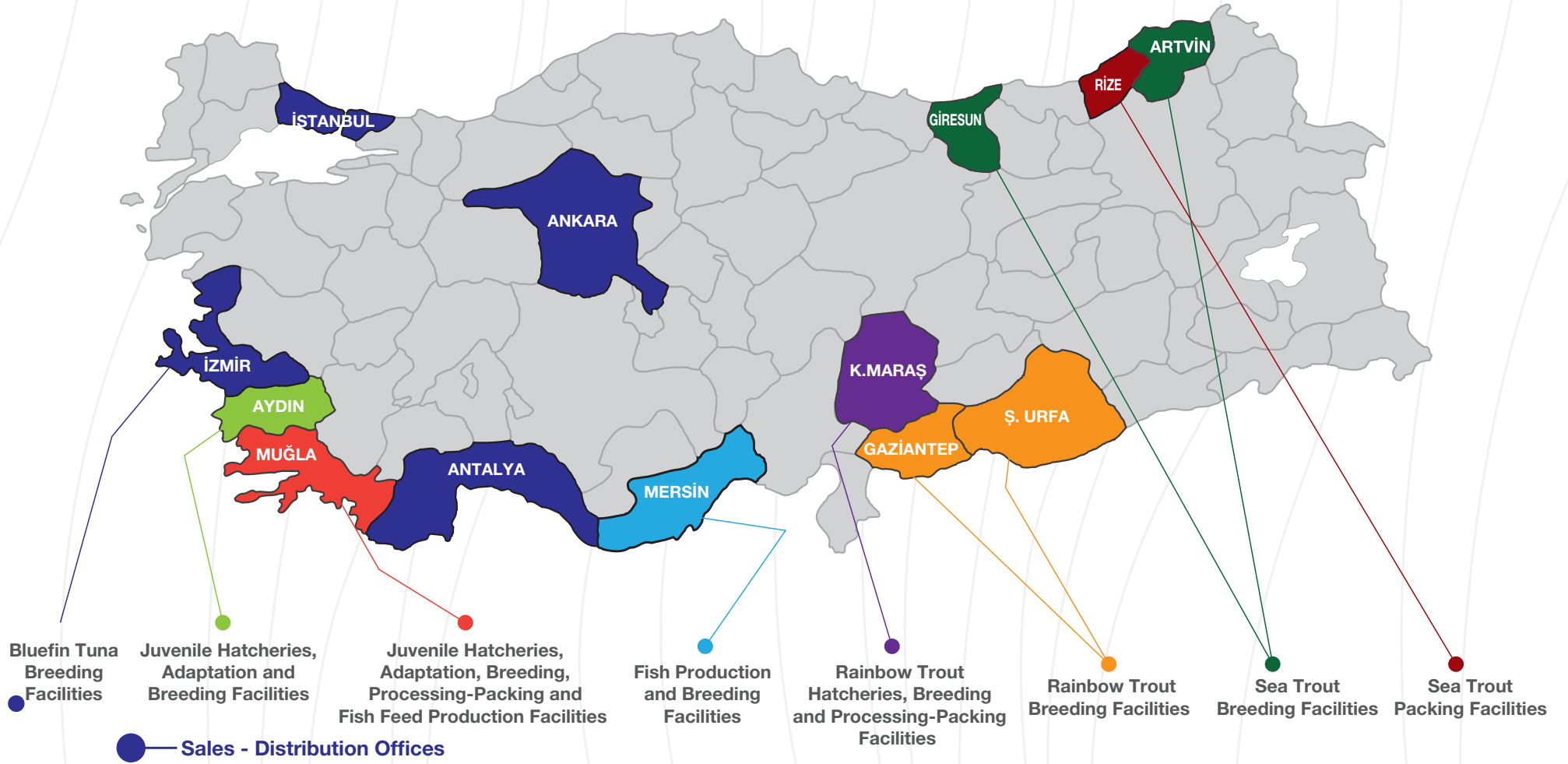


**OVENABLE &
MICROWAVEABLE
TRAY PRODUCTS IN
200 gr. RETAIL BOX**

Our Production Facilities and Sales-Distribution Offices all around the World



Our Production Facilities and Sales-Distribution Offices all around the Turkiye





twitter.com/KilicDenizTr



facebook.com/KilicDenizTr



instagram.com/kilicdeniztr



YouTube/Kiliç Deniz

BODRUM-TURKIYE

P: +90 252 559 02 83

export@kilicseafood.com

www.kilicseafood.com